



**THE POWER  
TO CONNECT**

[www.clevelandcable.com](http://www.clevelandcable.com)





## CONTENTS

About Us

Turnover

UK & Ireland Branches

Cleveland Cable FZCO

Who we work with

Accreditations

Accreditations

Company Structure

Quality

Assurance

Environmental

QHSE Department

BASEC & BSI

Key Contacts



## ABOUT US

We have over 40 years of knowledge in the industry and we have grown to be the foremost supplier of cables and cable accessories in the UK. We have a network of 9 locations across the UK, Ireland and the UAE which ensures we can reach customers around the world.

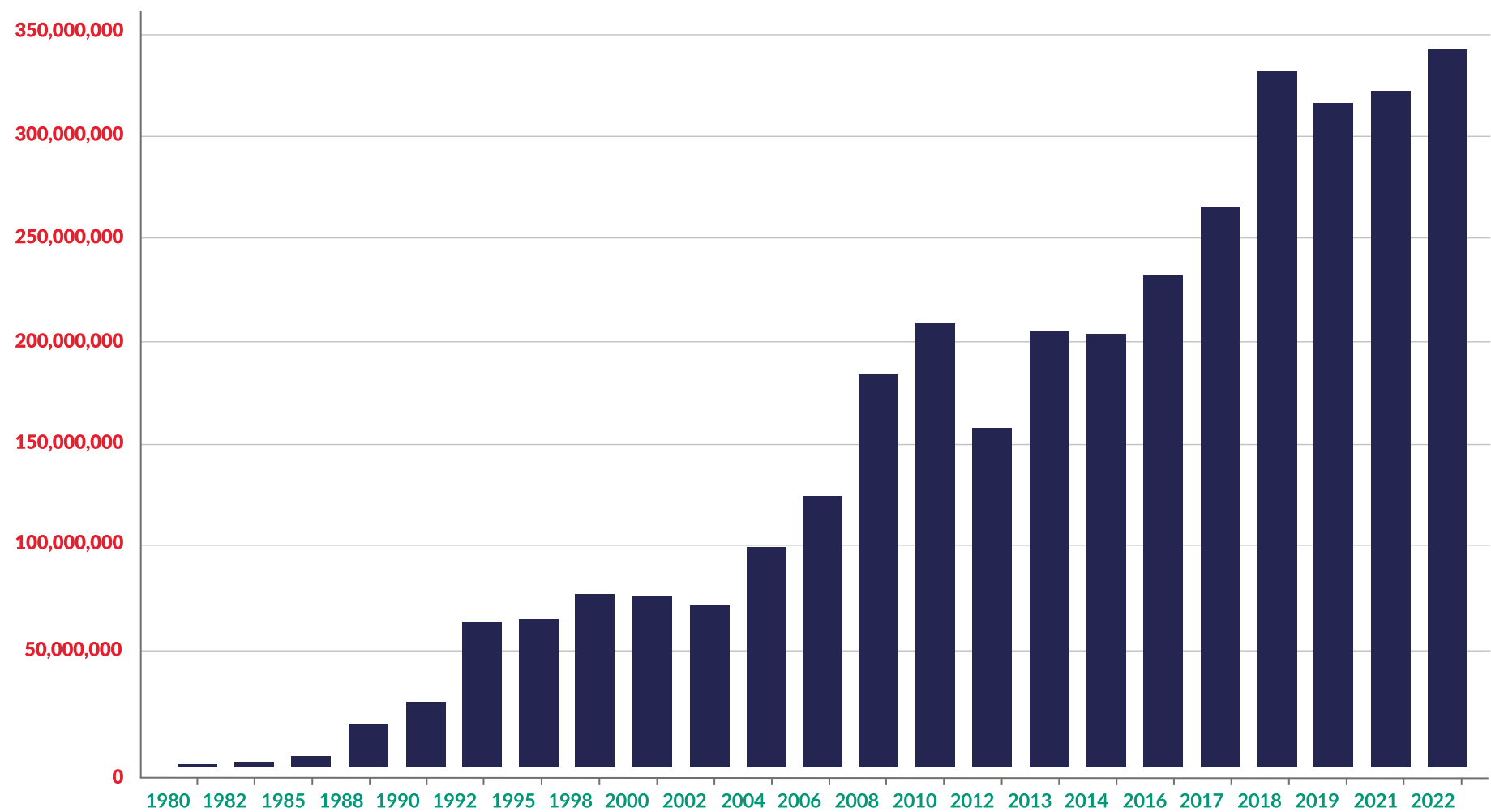




# Our Turnover

[www.clevelandcable.com](http://www.clevelandcable.com)







# Our UK & Ireland Branches

[www.clevelandcable.com](http://www.clevelandcable.com)





## Middlesbrough

Head Office is located in Middlesbrough Stocking a full range of cables, accessories and supporting equipment it covers 12 acres consisting 160,000sq ft of warehouse and distribution area.

Head Office has 250 employees and is home to the central management team including Managing Director, Sales Director and UK Sales Manager.

Head office hosts the majority of company admin It has sales and marketing teams, business development, purchasing, finance and credit control, exports, IT, HR, HSEQ team, logistics and 150 operational staff.

Our Area Sales Manager covers Teesside, County Durham, North and South Yorkshire and the east Riding of Yorkshire.

**Riverside Park Road, Middlesbrough, Cleveland TS2 1QW**  
**T: 01642 241 133**





## Glasgow

Our Glasgow branch stocks a varied range of cables armoured power and booklet cables PVC/LSZH, 6491 X/B, instrumentation, control cables, Belden PVC, rubber flexible and control cables.

The branch also on the Oil and Gas markets within Aberdeen having dedicated personnel and management working closely with our admin offices in Aberdeen and Cleveland Cable FZCO in the UAE 45 personnel are employed at Glasgow, consisting of Branch Manager, Area Manager for Aberdeen, Area Manager for Scotland and Northern Ireland Area Sales Managers, a sales team and 30 operational staff.

Our Glasgow office operates throughout Scotland and into the 6 counties of Northern Ireland.

**56 Clydesmill Road, Cambuslang Investment Park Cambuslang,  
Glasgow G32 8RE Tel: 0141 646 5000**





## London

Our London branch stocks an extensive range of cables and accessories which are suitable for all, electrical cabling requirements.

Also specialising in the rail industry and in particular Transport for London and the London Underground London is our second largest branch and has 95 employees.

The density of the population means that it has 3 Areas sales managers covering central and greater London, Hertfordshire, Kent, Surrey, Essex and Sussex.

**Crabtree Manorway, South, Belvedere, Kent DA17 6AB**  
**T: 0208 311 4141**

[www.clevelandcable.com](http://www.clevelandcable.com)





## Bristol

Our Bristol branch stock a varied range of cables and accessories. They particularly specialise in renewable energy cables, serving solar farms, windfarms and energy from waste markets, as well, as stocking cable for the Highways Agency.

Bristol has 46 staff consisting of local management, sales team and 30 operatives.

Bristol operates throughout the South West of England from Birmingham through Oxford down to Devon and Cornwall and into Wales.

St. Georges Industrial Est. St. Andrews Road, Avonmouth, Bristol BS11 9HS  
T: 01179 382 222

[www.clevelandcable.com](http://www.clevelandcable.com)





## Milton Keynes

Our Milton Keynes branch stock most cable types from single core reels, single core copper up to 630 mm, multicore cables in LSF/PVC, various 11 KV cables, HDC bare copper, Traffic cables and a large amount of solar related cable Milton Keynes has 46 staff consisting of local management, sales team and 31 operatives.

Milton Keynes services the South East coast from Lincolnshire, Peterborough, Cambridge.

Fitzhamon Court, Wolverton Mill, Wolverton Milton Keynes MK12 6LB  
Tel: 01908 221414

[www.clevelandcable.com](http://www.clevelandcable.com)





## Warrington

Our Warrington branch is one of our newest locations and stocks a vast array of booklet and power cables in both PVC and LSZH, general wiring cables and control cables.

Specialist cables are stocked for electrical metering companies and road/motorway networks.

We have 28 employees in Warrington which includes Branch Manager, Area Sales Managers, Sales team and operational staff.

The Warrington office covers the M62 corridor starting at Derbyshire through to Stoke, Stockport, Crewe, Chester, Manchester Liverpool and Shrewsbury.

**21 Kingsland Grange, Woolston, Warrington WA1 4RW**  
**Tel: 01925 655383**





## Dublin

We opened our Republic of Ireland branch in May 2016 and it's grown to become Ireland's largest cable distributor. We are the only cable distributor in Ireland with our own fleet of vehicles equipped with lorry mounted cranes that can service all 32 counties. In 2018 we were proud to open our extended warehouse facilities to ensure that our entire range of cable is available for our customers.

The extension was provided exclusively using local sustainable supply chain, and provided 9 more new jobs taking our staffing level to 36 at this one branch.

**Unit 1 IDA, Poppintree Ind Est, Finglas Dublin 11**  
**T: 00 353 1431 1096**

[www.clevelandcable.com](http://www.clevelandcable.com)





## Newcastle

Our Newcastle branch stocks cables up to 95mm<sup>2</sup>, along with a full range of accessories and support equipment.

The branch is just over an hour away from Head Office with stock of cables and accessories readily available Newcastle has 15 employees consisting of Branch manager, sales and 10 operational staff Operating throughout Tyne and Wear, which includes Newcastle, Sunderland and Gateshead, Northumberland to the north, Cumbria to the west.

Fisher Street Industrial Estate, Walker, Newcastle Upon Tyne, NE6 4LT  
T: 0191 263 3363

[www.clevelandcable.com](http://www.clevelandcable.com)





# Cleveland Cable FZCO

[www.clevelandcable.com](http://www.clevelandcable.com)





## Dubai

We started trading across the UAE in 2010 shipping direct from the UK to sites across the Middle East and Africa. In response to our client's requests we formed Cleveland Cable Trading FZCO in October 2016 and opened our purpose built Dubai Branch to give our clients in the UAE and Africa a dedicated, local Company with which to do business. A company that understands the business needs of the local economy and which is staffed and managed by a local team, supported by the supply chain, purchasing power, critical operation delivery, and experience that comes from dealing with one of the largest specialist cable distributors in Europe.

We employ 29 staff at Dubai, including local management, field sales reps and cable operatives. We stock an impressive range of cables and a range of ancillary equipment valued at circa AED 50,000,000.

**Plot No S30212, JAFZA South, Dubai, UAE**

**T: +971 488 06185**

[www.clevelandcable.com](http://www.clevelandcable.com)





Who we  
work with

[www.clevelandcable.com](http://www.clevelandcable.com)



In response to customer requests, we have expanded our product portfolio. We have embraced new technology and methods of working to keep up with the growing demand from our customers and ensure we can work with new and evolving markets.



**TClarke**

**JACOBS**

**SIEMENS**

**Balfour Beatty**





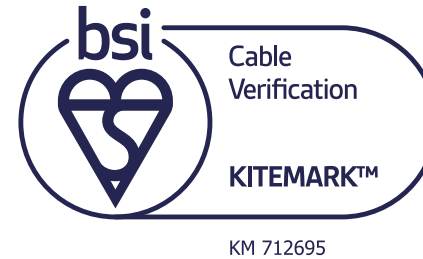
# Accreditations

[www.clevelandcable.com](http://www.clevelandcable.com)





Cleveland Cable Company is a responsible company that works to high standards.





# Company Structure

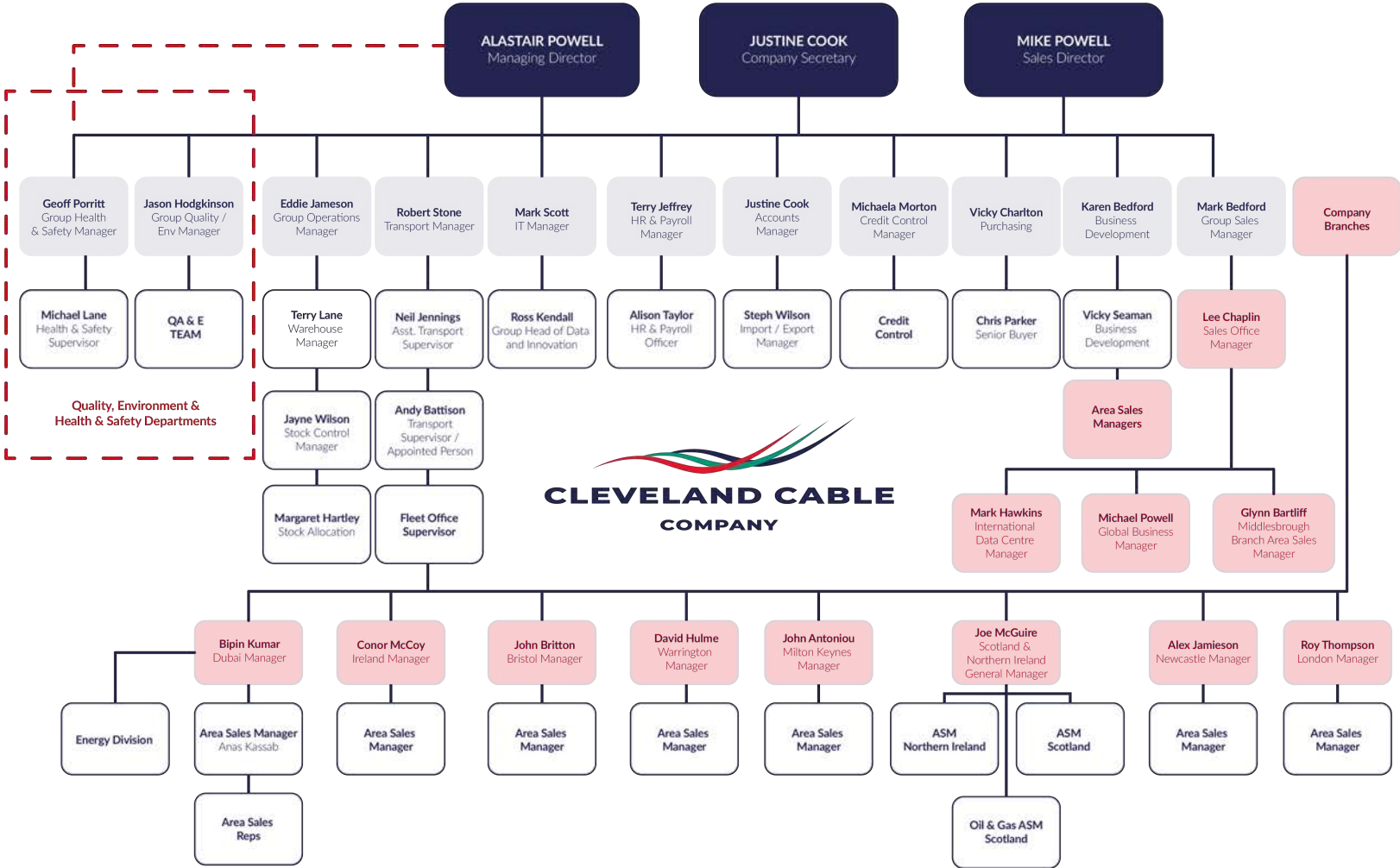
[www.clevelandcable.com](http://www.clevelandcable.com)





Cleveland Cable Company was set up with family values and the staff within it at the heart of the company.

With 550+ dedicated employees across the 11 branches, our company continues to grow everyday.





# Quality Assurance

[www.clevelandcable.com](http://www.clevelandcable.com)





Accredited to ISO 9001, Cleveland Cable Company recognises that sustained quality standards are essential in maintaining our good reputation and satisfying or exceeding customers' specified requirements.

We have a quality manual in place which provides forms, consistency, and continuity to the overall quality effort.

All products conform to the relevant standard with cables being BASEC approved, where applicable.

- Account and Quality Managers will liaise with goods in when the company receive the goods from the manufacturer.
- Quality Manager will ensure that the goods are inspected, stored and despatched to a high standard.
- Cables are checked before cutting and dispatch to ensure they're fit for purpose.
- Strict procedures are in place for the safe loading and transportation of orders.
- Customer complaints are dealt with promptly.
- Site visits can be arranged to liaise with the customers Quality Department regarding any issues or requests they may have.
- Cleveland Cable are the first company in the UK to gain accreditation to the BASEC Registered Stockist Scheme.



# Environmental

[www.clevelandcable.com](http://www.clevelandcable.com)





Accredited to ISO 14001 Cleveland Cable Company recognise that we are a company whose business activity has the potential to negatively impact the environment and that the protection and preservation of the environment is an integral part of our activities.

Therefore, we have a full Environmental management system in place which provides objectives to respect and care for the environment and comply with current legislation, regulations, good industry practice, and all other applicable requirements at the aim of minimising our environmental footprint whilst maintaining the quality of our business activities.



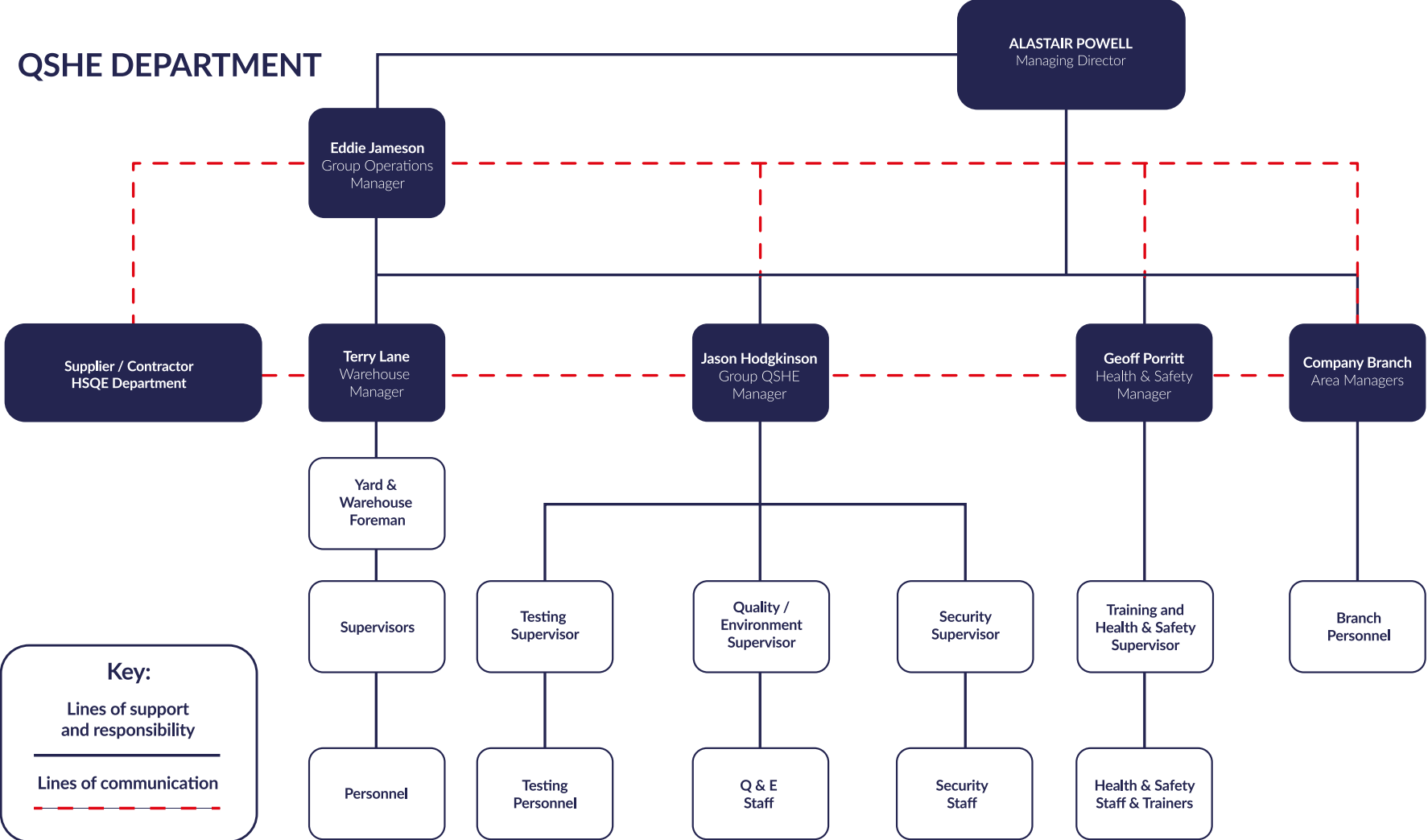


# QHSE Department

[www.clevelandcable.com](http://www.clevelandcable.com)



**QSHE DEPARTMENT**





The Quality and Environmental Manuals are fully compliant to ISO 9001 and 14001 which is audited to UKAS standards.

Cleveland Cable Company Limited has Company Health, Safety and Environment Policy Statements and Manuals, which are periodically reviewed and re issued in line with current regulations and practices.

The Health and Safety Manual is fully compliant to OHS 18001 standard, but the decision was made at board level to wait until the 2015 scope of OHS 18001 became a bonafide standard in its own right ISO 45001 before seeking audited accreditation. We will be seeking accreditation in Q2 of 2020 for completion in Q3 2021 along with the Other ISO renewals.

The appointed competent person for Health Safety Management at Cleveland Cable Company is Mr Geoff Porritt, Health Safety Manager.

Jason Hodgkinson is the QA E Manager who is in control of all matters relating to the implementation of the quality, and environmental management systems including policy and procedure, audits, inspections, and customer complaints.

They are supported by:

- Auditors and Site Inspectors
- Administration Staff
- Lab Technicians in our in house Testing facility which is accredited to BSI Kitemark for testing of cables.

Collectively they are referred to as the QHSE team which is the reference used for them throughout the QHSE manuals and in subsequent relevant documentation.



BASEC  
& BSI

[www.clevelandcable.com](http://www.clevelandcable.com)





Cleveland Cable has become the worlds first BASEC approved cable stockist which within our scope includes MV cables. This certification shows our commitment to supplying cable which has been independently tested and approved to the highest criteria in the world, meeting all independent 3rd party testing criteria and providing us with independent 3rd party certification.

As part of the accreditation process, Cleveland Cable's management systems were rigorously tested to ensure we have in place a robust and inviolable QA process. We are able to carry out extensive testing within our 'Test Centre' which is accredited to test cables to BSI Kitemark accredited standard. Within the capabilities of our BSI approved testing facility we have the ability to test MV cables up to 33KV.

By meeting the stringent assessment process, Cleveland Cable Company has become accredited under the Registered Stockist scheme, validating its internal quality programmes, procedures and traceability lines.

Cleveland Cable Company regularly undertakes quality assessments to verify cable design and electrical properties to ensure they meet the required standards. This includes in house testing of cables held in their own stock. The company also regularly visit the overseas factories of its suppliers to undertake audits and to ensure professional quality management systems along with production line and test facilities meet the high standards required by Cleveland Cable Company and the UK market.

We put our cables through rigorous quality checks from the moment the cable arrives at our branches with visual inspections and samples taken via our sample program. samples are then inspected and tested within our lab to confirm they meet the requirement of the standards and our high standards.



# BASEC Approved Cables

[www.clevelandcable.com](http://www.clevelandcable.com)



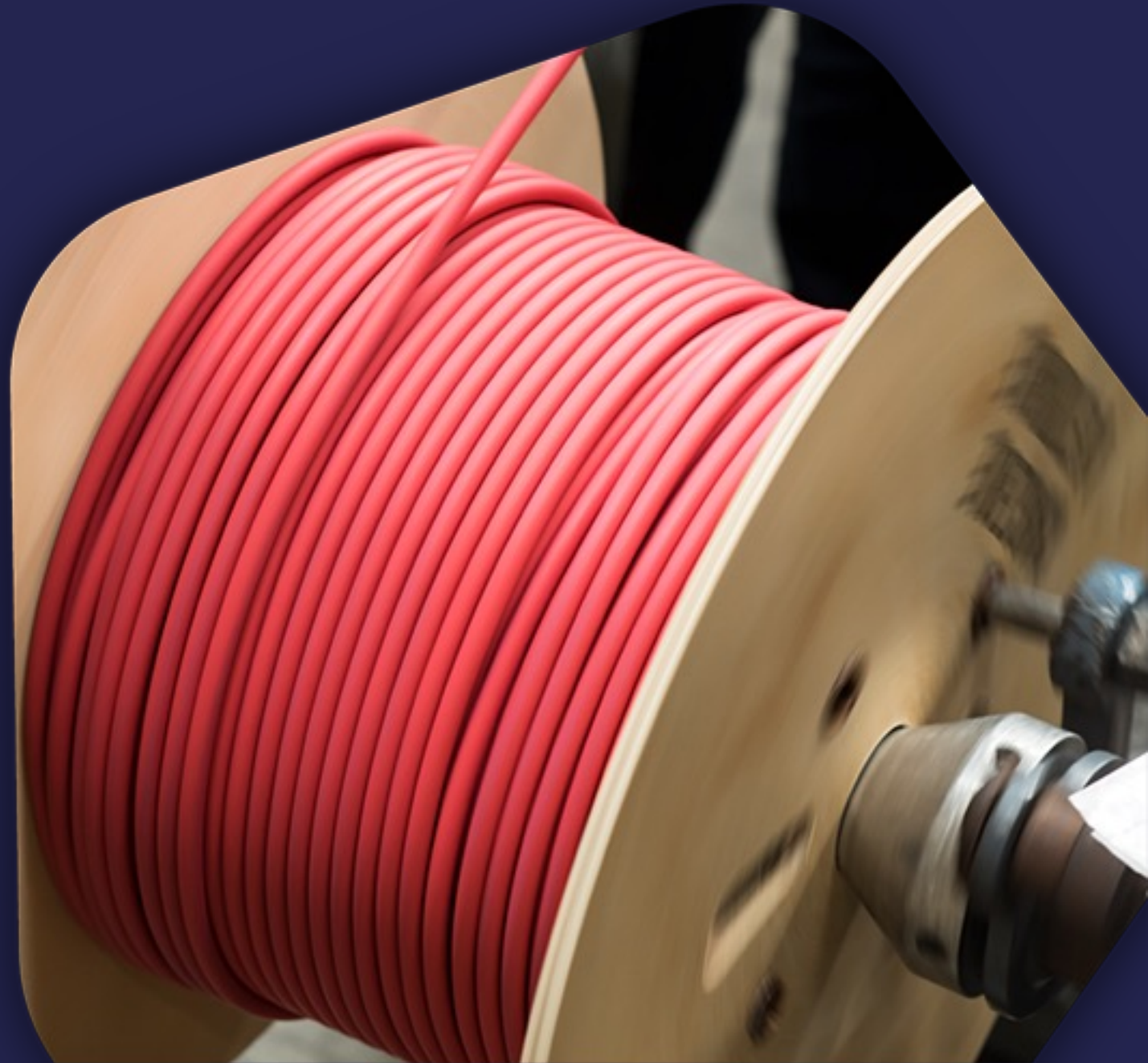
| Cable Type                | Number of Cores           | Sizes Available |
|---------------------------|---------------------------|-----------------|
| BS6724 (LSF SWA)          | 2 to 4 core               | 1.5mm to 400mm  |
|                           | 5 core                    | 1.5mm to 70mm   |
|                           | Multi core - 7 to 37 core | 1.5mm to 4mm    |
|                           | Single Core (AWA & SWA)   | 50mm to 630mm   |
| BS5467 (PVC SWA)          | 2 to 4 core               | 1.5mm to 400mm  |
|                           | 5 core                    | 1.5mm to 70mm   |
|                           | Multi core - 7 to 37 core | 1.5mm to 4mm    |
|                           | Single Core (AWA & SWA)   | 50mm to 630mm   |
| BS EN 50525-2-31 (HO7V-R) | Single Core               | 1.5mm to 630mm  |
| BS EN 50525-3-41 (HO7Z-R) | Single Core               | 1.5mm to 300mm  |
| BS6004                    | 2 to 3 core               | 1mm to 16mm     |
|                           | Single Core               | 1mm to 70mm     |
| BS 7211                   | 2 core                    | 2.5mm to 6mm    |
| BS 8436-CSX               | 2 to 4 core               | 1.5mm to 4mm    |

| Fire Resistant Cable                    | Number of Cores | Sizes Available |
|---|-----------------|-----------------|
| BS7846 (FP)                             | 2 to 4 core     | 1.5mm to 400mm  |
| BS7846 (FPE)                            | 2 to 4 core     | 10mm to 300mm   |
| BS7629-1 (Standard 60)                  | 2 to 4 core     | 1.5mm to 4mm    |
| BS7629-1 (Enhanced 120)                 | 2 to 4 core     | 1.5mm to 4mm    |
| Irish Standard Twin & Earth<br>IS 201-4 | 2 to 3 core     | 1.5mm to 16mm   |



# Key Contacts

[www.clevelandcable.com](http://www.clevelandcable.com)





|                           |                  | Tel:          | Email:                            |
|---------------------------|------------------|---------------|-----------------------------------|
| Middlesbrough Head Office | General Sales    | 01642 241133  | Sales@clevelandcable.com          |
| Group Sales Manager       | Mark Bedford     | 01642 757742  | MBedford@clevelandcable.com       |
| Finance Manager           | Justine Cook     | 01642 757 778 | JCook@clevelandcable.com          |
| QA/Environmental Manager  | Jason Hodgkinson | 01642 757300  | JHodgkinson@clevelandcable.com    |
| Health & Safety Manager   | Geoff Porritt    | 01642 266019  | GPorritt@clevelandcable.com       |
| Credit Control Manager    | Michaela Morton  | 01642 757787  | Mmorton@clevelandcable.com        |
| Transport Manager         | Robert Stone     | 01642 266051  | Rstone@clevelandcable.com         |
| Global Business Manager   | Michael Powell   | 01642 757772  | michael.powell@clevelandcable.com |
| Office Sales Manager      | Lee Chaplin      | 01642 757307  | LChaplin@clevelandcable.com       |



Thank you  
Any Questions?